

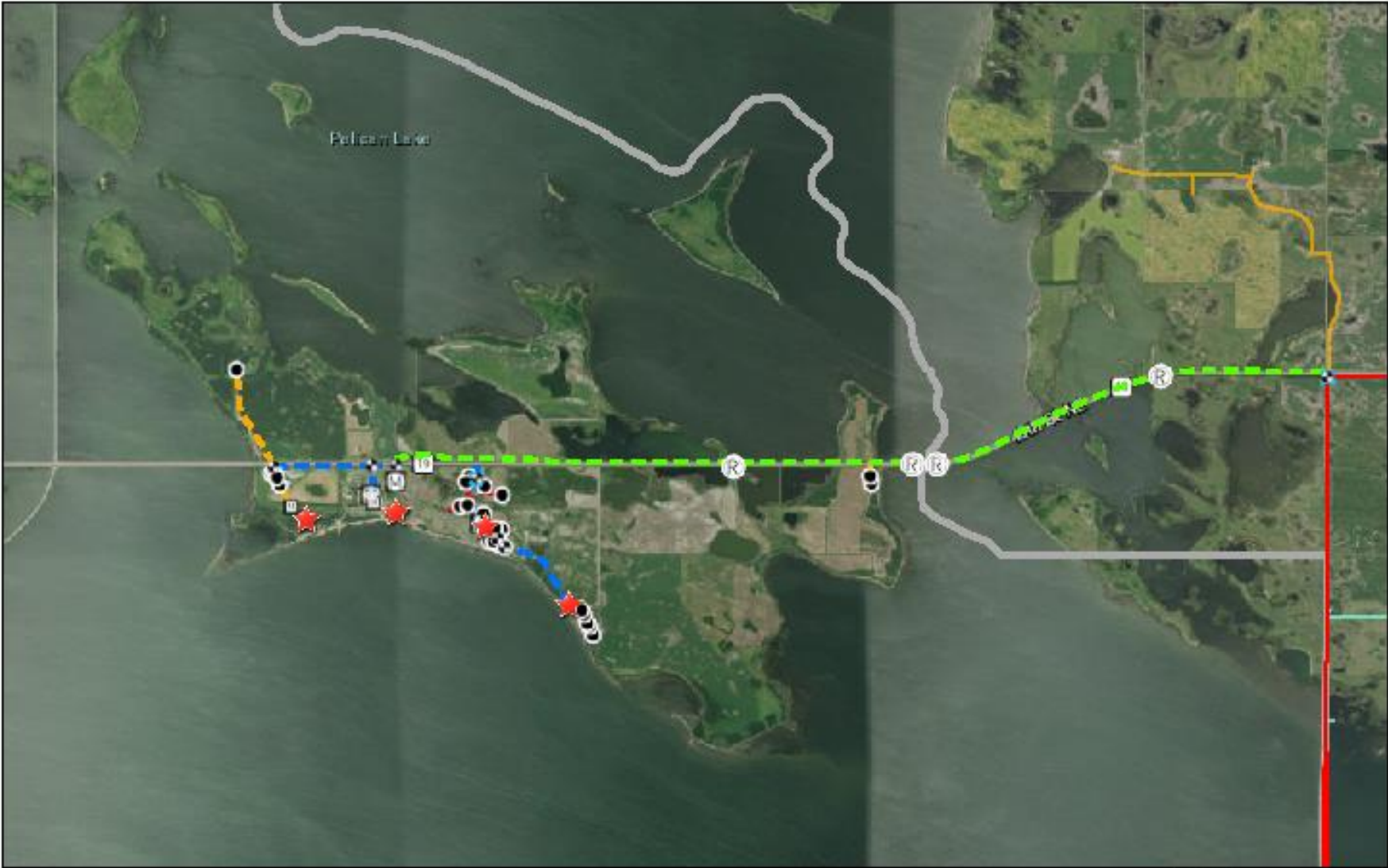
Greater Ramsey Water District Annual Meeting Manager Report

Oswald Bay Expansion Project
Northeast Water Supply Study
Water Use 2019
City of Crary Request
2019 Members Added
Summer Projects 2020

▶ **Project Outline**

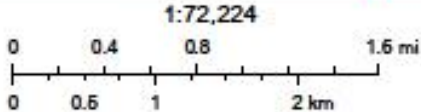
- ▶ Received grant September 24,2019 from State Water Commission
- ▶ 75 % Grant of Eligible costs up to \$1,328,000 included Dayton and Forde Townships
- ▶ Project Estimate \$1.17 Million
- ▶ Open Bids April 2,2020
- ▶ Completion Date September 15,2020
- ▶ 2 Large Campgrounds
- ▶ 1 Small Campground
- ▶ 4 Subdivisions
- ▶ 28 individual users
- ▶ 39 curb stops
- ▶ Parallel 6” waterline by Airport
- ▶ Dayton and Forde Townships Removed from project due high cost per user

Greater Ramsey Water District



1/28/2020, 11:38:51 AM

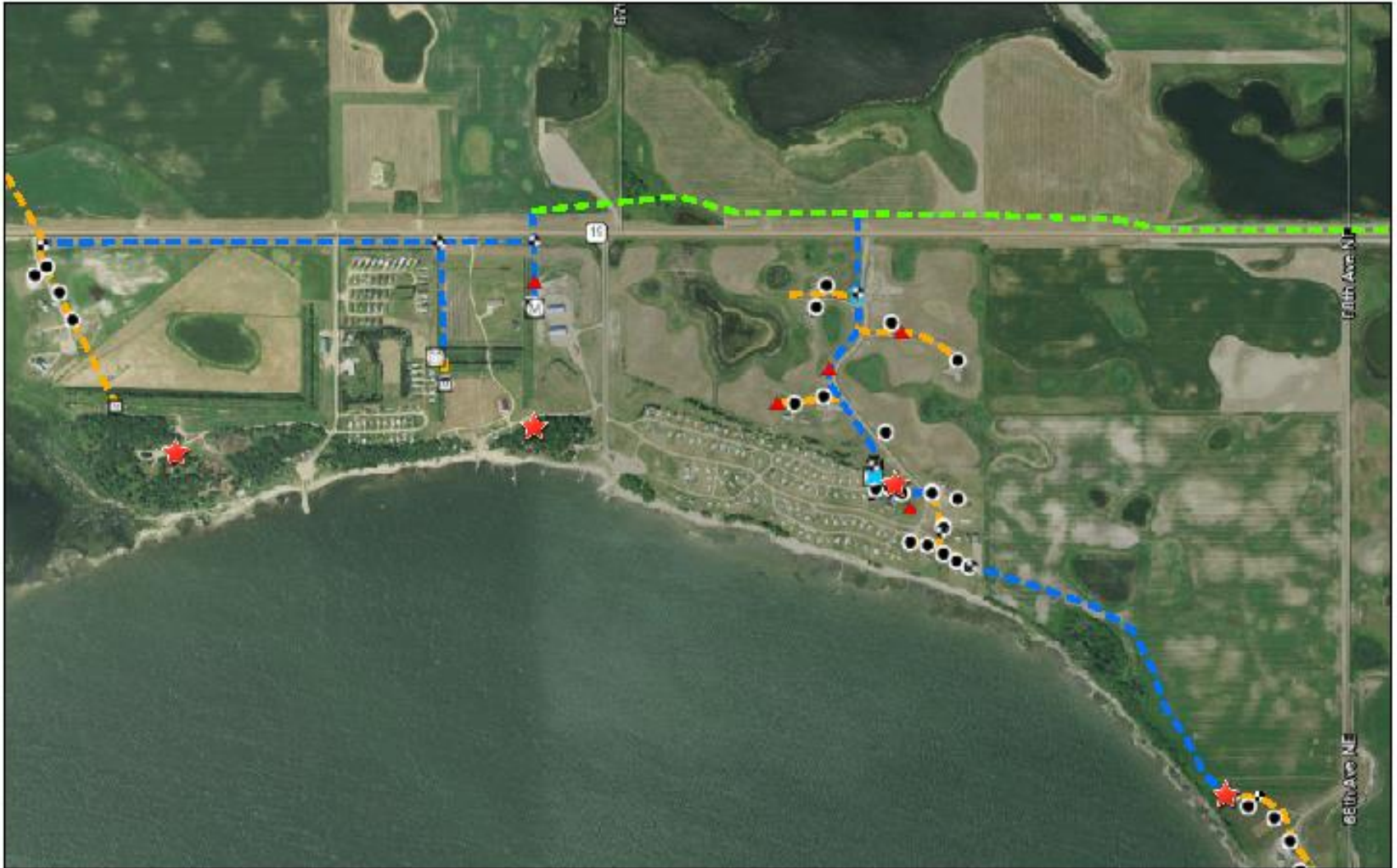
- ★ Notes/Images - Point layer
- Expansion - System_Valve
- Ball
- ⚓ Gate
- Expansion - System_Point
- ✕ Tie-In



© OpenStreetMap (and) contributors, CC-BY-SA, Esri, HERE, Garmin, ©

Map data © OpenStreetMap contributors, CC-BY-SA | Esri, HERE, Garmin, © OpenStreetMap contributors, and the GIS user community |

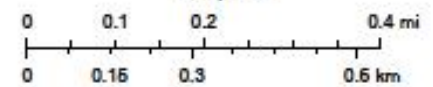
Greater Ramsey Water District



1/28/2020, 11:50:54 AM

1:18,056

- Notes/Images - Point layer
- Expansion - System_Valve
- Ball
- Gate
- Expansion - System_Point
- Tie-In
- Expansion - Service
- Curb Stop
- Master Meter
- Meter Pit
- Expansion - Hydrant
- Yard
- Expansion - Fitting
- Cap
- Tee/Saddle



© OpenStreetMap (and) contributors, CC-BY-SA, Esri, HERE, Garmin, ©

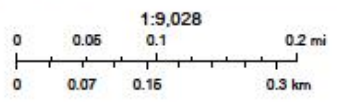
Map data © OpenStreetMap contributors, CC-BY-SA | Esri, HERE, Garmin, © OpenStreetMap contributors, and the GIS user community |

Greater Ramsey Water District



2/3/2020, 8:06:56 AM

- ★ Notes/Images - Point Layer
- Notes/Images - Line Layer
- Expansion - System Point
- ★ Tie-In
- + Road Crossing
- Expansion - Secondary Pipeline 8"
- Expansion - Secondary Pipeline 6"
- System Valve
- Gate
- Main Pipelines 6"
- Secondary Pipelines 1"
- Sections
- Townships



© OpenStreetMap (and) contributors, CC-BY-SA, Esri, HERE, Garmin, © OpenStreetMap contributors, and the GIS user community

Northeast Area Regional Water Master Plan

Project Completed by Advanced Engineering
Services

Funded by State Water Commission and
Water Districts and Cities of Northeast North
Dakota

Main focus Long Term Water Supply
Management

Water Use Report

- ▶ 4 Permits = 689 Acre Feet = 225 Mil Gal
- ▶ 2019 186.6 mil Produced 165.0 mil sold / Loss 11.6%
- ▶ 2019 40.9 million from City and NRWD
- ▶ 2019 145.7million from well field
- ▶ 2018 185.0 million Produced 170 mill sold/ Loss 8.15%
- ▶ 2018 31.6 million from City and NRWD
- ▶ 2018 153.4 million from well field

2019 Users Added

- ▶ Water 22 users adding 3600 feet of pipe
- ▶ Water 5 Accounts reinstated
- ▶ Water 4 Accounts paid memberships adding 2020
- ▶ Total 2019 - 27 + 4 spring 2020
- ▶ Sewer 3 users adding 500 feet of pipe

City of Crary



GRWD offered the following proposal to take ownership of the existing water system of Crary.

All residents being served by Crary will become members of GRWD with no up-front membership fee.

The City will turn over ownership of the system to GRWD at no charge.

GRWD will maintain the water system to the curb stops.

GRWD will maintain the meter and meter reading equipment.

The City will be placed on the GRWD's monthly testing schedule per NDSHD rules.

Monthly base will be set at \$20 per month plus \$15 in lieu of the membership fee and for repairs and maintenance listed above.

Costs of water will be the same as all members -Currently \$4.50 per 1000 gallons.

GRWD will only shut off a member's curb stop for non-payment of the water bill, not any charges owed the City. (Ex. Sewer, garbage and reserves)

Summer Projects

Replace Roof at Treatment Plant
Continue Repairing Extension Rods
Meter Inspections
Manhole Repair and Lining

MISSION STATEMENT

- ▶ **GRWD Mission Statement:** To provide a reliable source of potable water and sewer service for its members' current and future needs at a reasonable cost .