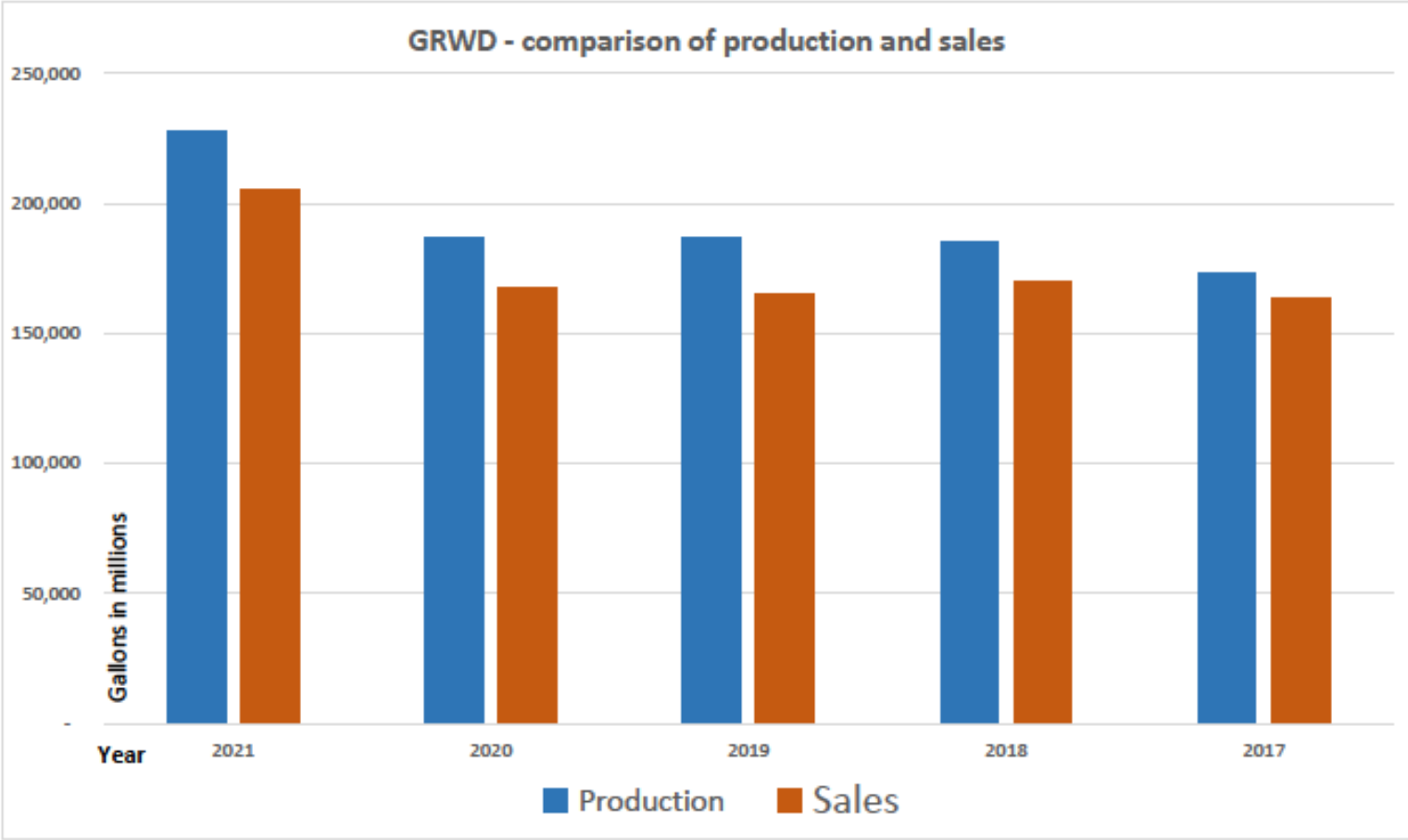


Greater Ramsey Water District Annual Meeting Manager Report

Water Use 2021
2021 Members Added
Grwd New Engineering Firm
Cost of Service Analysis (COSA)
Projects for 2023-2025
Transmission Line Update

Water Use Report

- ▶ 4 Permits = 689 Acre Feet = 225 Mil Gal
- ▶ 2021 225.6 mil Produced 203.8 /Loss 9.61%
- ▶ 2021 56.4 million from City and NRWD
- ▶ 2021 171 million from well field
- ▶ 2021 16.9 million for Carrington/sold 15.1 million - 11.13% loss
- ▶ 2020 186.6 mil Produced 167.8 mil sold /LOSS 10.0%
- ▶ 2020 41.5 million from City and NRWD
- ▶ 2020 145.1 million from well field
- ▶ 2020 14.6 million for Carrington/sold 12.9 million - 11.6% loss



2021 Users Added

- ▶ Water - 53 users adding 6200 feet of pipe
- ▶ Developer's agreements -15325 feet of pipe for 20 users
- ▶ City of Crary -56 user July 1,2021
- ▶ 2021 - 129 users

- ▶ Sewer 7 users adding 775 feet of pipe

GRWD advertised for Request for engineering services due to the following reasons:

1. Water Treatment Plants are designed around peak day water demands over a 16-hour run-time, while meeting firm capacity. Firm capacity is when one of your critical treatment components are off line. Such as filters, wells, and high service pumps
 - ▶
1. Current firm capacity at the Ramsey WTP.
 - a. Filter Capacity = 600 GPM (576,000 gallons over 16 hours)
 - b. Well Capacity = 900 GPM (864,000 gallons over 16 hours)
 - c. High Service Capacity = 675 GPM (648,000 gallons over 16 hours)
 - ▶
1. In June – August 2021, the Ramsey WTP had filter firm capacity **20 out of 60 days** over a 24 hour runtime, and **33 out of 60-days** over a 16-hour run time.
 - ▶
1. If the Ramsey WTP had to serve the entire system (DL WTP offline or shutoff or reduced)
 - a. **June – August system wide capacity could not be met by the Ramsey Plant only, running all filters 24/7 = 20 out of 60 days**
 - b. **June – August system wide firm capacity would have been exceeded 42 out of 60 days at the Ramsey WTP over a 24 hour runtime, and 56 out of 60-days over a 16-hour run time.**

GRWD INTERVIEWED TWO ENGINEERING FIRMS THAT RESPONDED TO THE RFQ.

BARTLETT AND WEST OF BISMARCK ND. - GRWD'S CURRENT FIRM AT THE TIME OF THE INTERVIEWS

ADVANCED ENGINEERING OF GRAND FORKS ND. GRWD'S HIRED TO COMPLETE THE COST OF SERVICE ANALYSIS

EACH FIRM WAS SCORED ON THE PRESENTATION AT THE INTERVIEW

GRWD ELECTED TO HIRE ADVANCE ENGINEERING AND LOOKS FORWARD TO WORKING WITH THE NEW ENGINEERING FIRM TO HELP GRWD FOR MANY YEAR INTO THE FUTURE.

WHY A COSA STUDY?

GRWD needed a road map to guide the board of directors to plan for the future needs of the district. The model predicts the future needs of the district to balance all aspects of maintaining a healthy utility.

GRWD is taking a proactive approach to comprehensive financial planning.

Using the model will help GRWD:

1. Maintain a consistent level of service
2. Implement modest rate adjustments.
3. Justifying capital improvement reserves

Short term and Long term Projects

Short Term

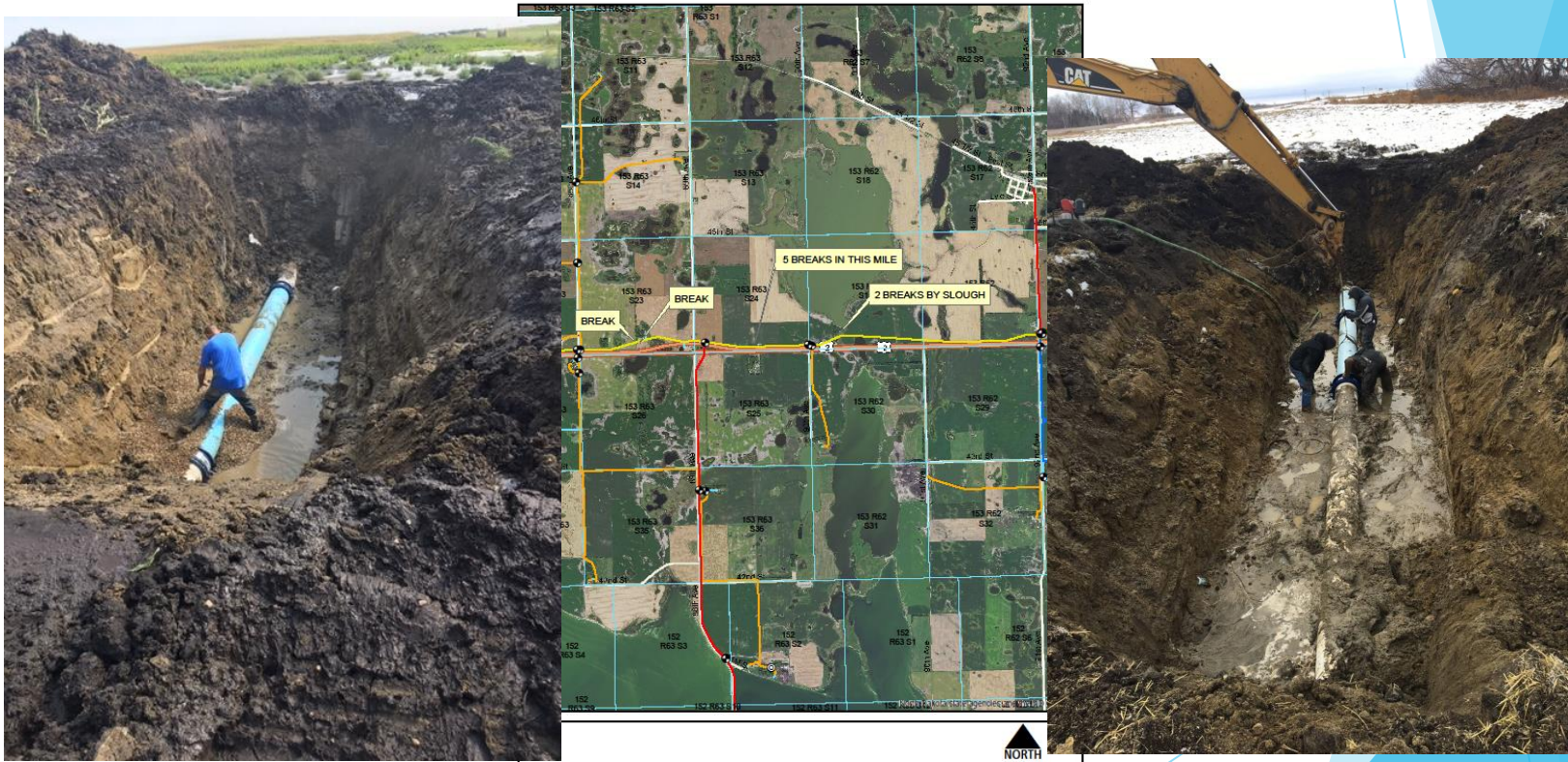
1. Treatment Plant base line study
2. Install a new well
3. Modest increase of flow from Plant to North area

Long Term

1. Upgrades at Treatment Plant
2. Eastern Booster station - joint project with City
3. Increase transmission line capacity

14" Transmission Line Update

1. 10 Breaks in a 4 mile stretch from Cray Booster to 1 mile west of Rest Area.
2. Rerouted 2" line to serve area south temporarily during repairs.
3. Average \$5000 to \$6000 per break.
4. 2021 reroute service line to Rest Area and 2" secondary line serving 3 locations in repair area.



MISSION STATEMENT

- ▶ **GRWD Mission Statement:** To provide a reliable source of potable water and sewer service for its members' current and future needs at a reasonable cost .